

PE - 2 times during the week

Choose a cosmic yoga video to join in with:

<https://www.youtube.com/user/CosmicKidsYoga>



This one is about crocodiles!

<https://www.youtube.com/watch?v=obzFP6eEGAq>

Year 1 Home and In School Learning

Topic - Animals

wb 25/1/21

This week's wider curriculum learning is linked to the book 'Let's creep through the crocodile creek'.

Key learning area:

- **PE** - General fitness - get your heart rate up and build up your muscles!
- **Science**- I can identify and classify animals.
- **Geography**- I can use basic geographical vocabulary to refer to key physical features (beach, cliff, coast, forest etc) and key human features, (city, town, village, farm, house etc)
- **Art**- I can explore and experiment with a range of collage materials. I can cut and tear materials.

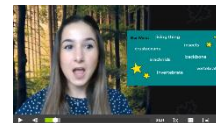
Monday - Outdoor learning

We see Shelly, rabbit and mouse go on an adventure through the crocodile creek. They move in lots of different ways in the story- creep, clamber, swing, hop, run. Today, see how many different ways you can move! This might whilst you are out for a walk, or around your garden.



Challenge: How could you cross the creek without touching the crocodiles or falling in the water? Could you use something to make a bridge or as stepping stones?

Tuesday - Science



Follow along with Oak National Academy Science lesson 3:

<https://classroom.thenationalacademy/lessons/wich-animal-families-are-invertebrates-ctgk4r>

KS1 - The Animal Kingdom - Lesson 3- Which animal families are invertebrates?

Thursday - Geography

Watch the short video, which explains about human and physical geographical features.

<https://www.bbc.co.uk/bitesize/topics/zqj3n9q/articles/zr8q7nb>

Can you think of some human and physical features? Whilst out for a walk, take a photo on seesaw (or a drawing) of somewhere in your local area, and label it with all the human and physical features you can spot. See seesaw for an example! **Optional extra:** Sort the images below into human and physical features.

Friday - Art

We are going to focus this week on collage and explore texture and colour. Collage involves ripping, tearing, placing and arranging! You can use any materials to collage- the best textures and colour materials often come from your recycling bin! See seesaw for a tutorial video.



Remember to share anything you have done on SeeSaw!

Human geographical features

Physical geographical features

Cut out each geographical feature and put it in the correct column



factory



beach



hills



farm



city



port



seasons



vegetation



village



house



soil



weather



ocean



forest



town



valley



cliff



office



river



shop



coastline



mountain



harbour

